



具可轉彎多位置且可選擇 Input 的設定方法

Dated: 0620_2020

1. 本文說明可以輸入具可轉彎多位置且可選擇 Input 的設定, **選擇 Input 後直接執行, 不需再按 Enable 即可執行.** 並且在位置上可以轉彎, 多一個 **blending position**. 一個共 5 個位置的可程式 Input 的設定方法, 並且每執行完畢一段行程, 都可以輸出 Output2 Singal (+5V), 可以在 Output 設定輸出.
2. 工作流程如下:
 - (1) 在 Position mode:
 - (A) Pos. management = **Pos-Tab input-start**, 設定 Input IO 及 Position Table 分別如下:
I.0 = Power on;
相對應的位置 Table 要設定 Index [0], Index[1], Index[2], Index[3] →看 Caliper 的**方塊紅字**.
I.1 = Index[0];
I.2 = Index[1]; 在這個選項, 最後面設定成 **Blend next position**, 也就是說 **Setting pos. = Blend next position**. 如此中間就多一個位置. 如下圖.
I.3 = Index[2];
I.4 = Index[3];

按鍵順序若為 Power on [I.0] → [I.1]；此時走到 Index[0]的位置。

按鍵順序若為 Power on [I.0] → I.2 = Index[1] 此時走到 N3 的位置，中間多一個位置。

- 3. Blend next pos. 可以重複按(重複執行)，就是按下，執行完後，再按下，會再啟動。其他(Stop position)不行
- 4. 在 Output 設定, Setting out1 = [8] Pos output; 設定 Time output, Time output1 [s]= 0.01, 則會輸出 0.01s 的訊號，導通 OUTPUT1 (可以用在當成下一個用此訊號的 Input, 用 Active low 來啟動)。

The screenshot shows the 'Drive Data' section of a control software. The 'Position' tab is active, displaying 'Pos-Tab input-start' settings. A table below lists various position settings with columns for Index/N?, Accel., Decel., Time, Abso./Rela., Vel. mode, Setting pos., and Output. Two rows are highlighted with red boxes: the row for Index 1 (N2) with 'Blend next pos.' and the row for Index 3 (N3) with 'Stop position' and 'Out1'.

Index/N?	Accel.	Decel.	Time	Abso./Rela.	Vel. mode	Setting pos.	Output
0 1	200	10000	1500	Absolute	Tab-rec data	Stop position	Null
1 2	10000	10000	1500	Absolute	Tab-rec data	Blend next pos.	Null
2 3	1000	1000	500	Absolute	Tab-rec data	Stop position	Out1
3 4	20	20	500	Absolute	Tab-rec data	Stop position	Null
4 5	10000	10000	0	Absolute	Tab-rec data	Stop position	Null
5 6	10000	10000	0	Absolute	Tab-rec data	Stop position	Null
6 7	10000	10000	0	Absolute	Tab-rec data	Stop position	Null

Caliper[TOMCAT EVO] Version: 4.22

File Commands Print Language About

2)Dg/Tmc Evo - NTT 01-[TMC]Slave

[I.0]Power [I.1]Sel/St: B0/I0 [I.2]Jog+ [I.3]Sel/St: B1/I1 [I.4]Home Pos. [I.5]Reset [I.6]--- [I.7]---

Data Monitor

Drive 6,0-12,0 [230 V]
Bus Input/OutPut
Mode [3]Position
Current -0.22 A
Temp. 35.6 °C
Speed [Mot] 0.0 mm/s
Position[Mot] 100.00 mm

Input

I.0	Power on	<input checked="" type="checkbox"/>
I.1	Selec./Start: Bit0/In0	<input type="checkbox"/>
I.2	Jog+	<input type="checkbox"/>
I.3	Selec./Start: Bit1/In1	<input checked="" type="checkbox"/>
I.4	Home Position	<input type="checkbox"/>
I.5	Reset Alarm	<input type="checkbox"/>
I.6	Analog Input 1	7
I.7	Output 2	--

Output

O.0	Pos. output	<input type="checkbox"/>
O.1	Pos output	<input checked="" type="checkbox"/>
O.2	Pos output	<input type="checkbox"/>

Menu

- Field Bus
- Motor Data
- Advanced Setup
 - Speed Regulator
 - Current Regulator
 - Position loop
 - Alarm Memory
 - Alarm Mode
 - Limit
 - Notch Filter
 - Iq Filter
 - Output
 - Generic data
 - Braking resistor
- Control Set
 - Control Setting
 - Digital Input
 - Factors
 - Position Setting
 - Position

Drive Data

Output

Setting Out2/(Analog2-In. Digit7) Output2 0040h

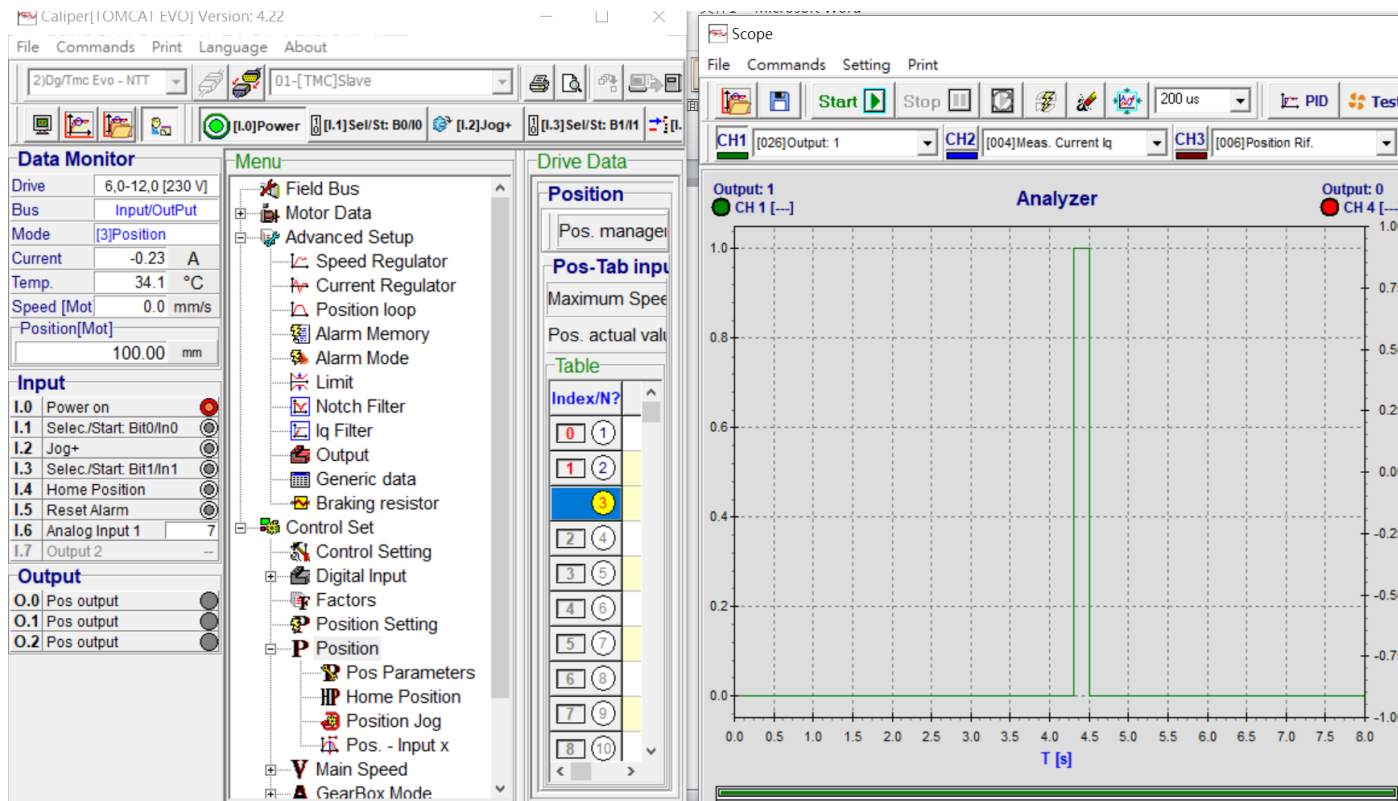
Setting output

Setting out 0	[8] Pos output
Setting out 1	[8] Pos output
Setting out 2	[8] Pos output

Output 00h

0 Speed | Motor Brake | Pos-Freq | Time output

Time output0 [s]	0.20	Time output1 [s]	0.01
Time output2 [s]	0.20		



=> 可以走完後, 並且輸出 Output 1 signal 時間為 0.01s 導通 → 0.1 可以拿來用. (可以用在當成下一個用此訊號的 Input, 用 Active low 來啟動)

5. Blend next pos. 可以重複按(重複執行), 就是按下, 執行完後, 再按下, 會再啟動. 其他(Stop position)不行

6. 若在最後一個 Setting pos. 設定為: Return start pos., 則會回到原始位置, 並且循環不止(可以當循環用), 直到 [I.0] power on 被按下, 才停止.

2)Dg/Tmc Evo - NTT | 01-[TMC]Slave_Green

[I.0]Power [I.1]Sel/St: B0/I0 [I.2]Jog+ [I.3]Jog- [I.4]Home Pos. [I.5]Reset [I.6]--- [I.7]---

Data Monitor

Drive: 6,0-12,0 [230 V]
 Bus: Input/OutPut
 Mode: [3]Position
 Current: -0.07 A
 Temp.: 36.0 °C
 Speed [Mot]: -100 rpm
 Position (Rev/Offset)[Mot]:
 0 18889 Counts
 18889 Counts

Input

I.0 Power on
 I.1 Selec./Start: Bit0/In0
 I.2 Jog+
 I.3 Jog-
 I.4 Home Position
 I.5 Reset Alarm
 I.6 Analog Input 1: 3
 I.7 Output 2: -

Output

O.0 Drive OK
 O.1 Pos output
 O.2 Homing attained

Menu

- Field Bus
- Motor Data
- Advanced Setup
 - Speed Regula
 - Current Regul
 - Position loop
 - Alarm Memory
 - Alarm Mode
 - Limit
 - Notch Filter
 - Iq Filter
 - Output
 - Generic data
 - Braking resist
- Control Set
 - Control Setting
 - Digital Input
 - Factors
 - Position Settir
 - Position
 - Pos Parar
 - Home Pos
 - Position J
 - Pos - Inu

Drive Data

Position

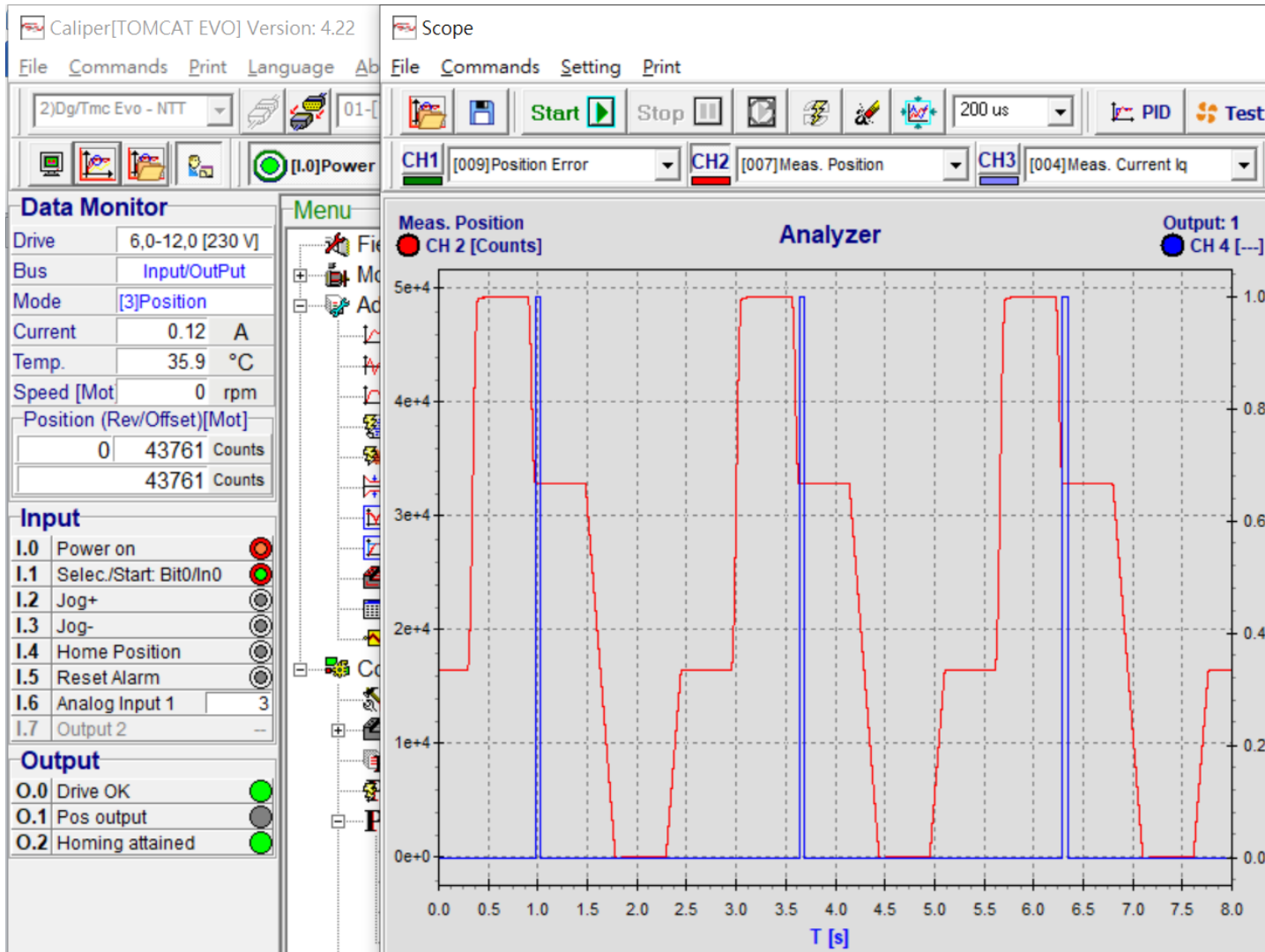
Pos. management: Pos-Tab input-start

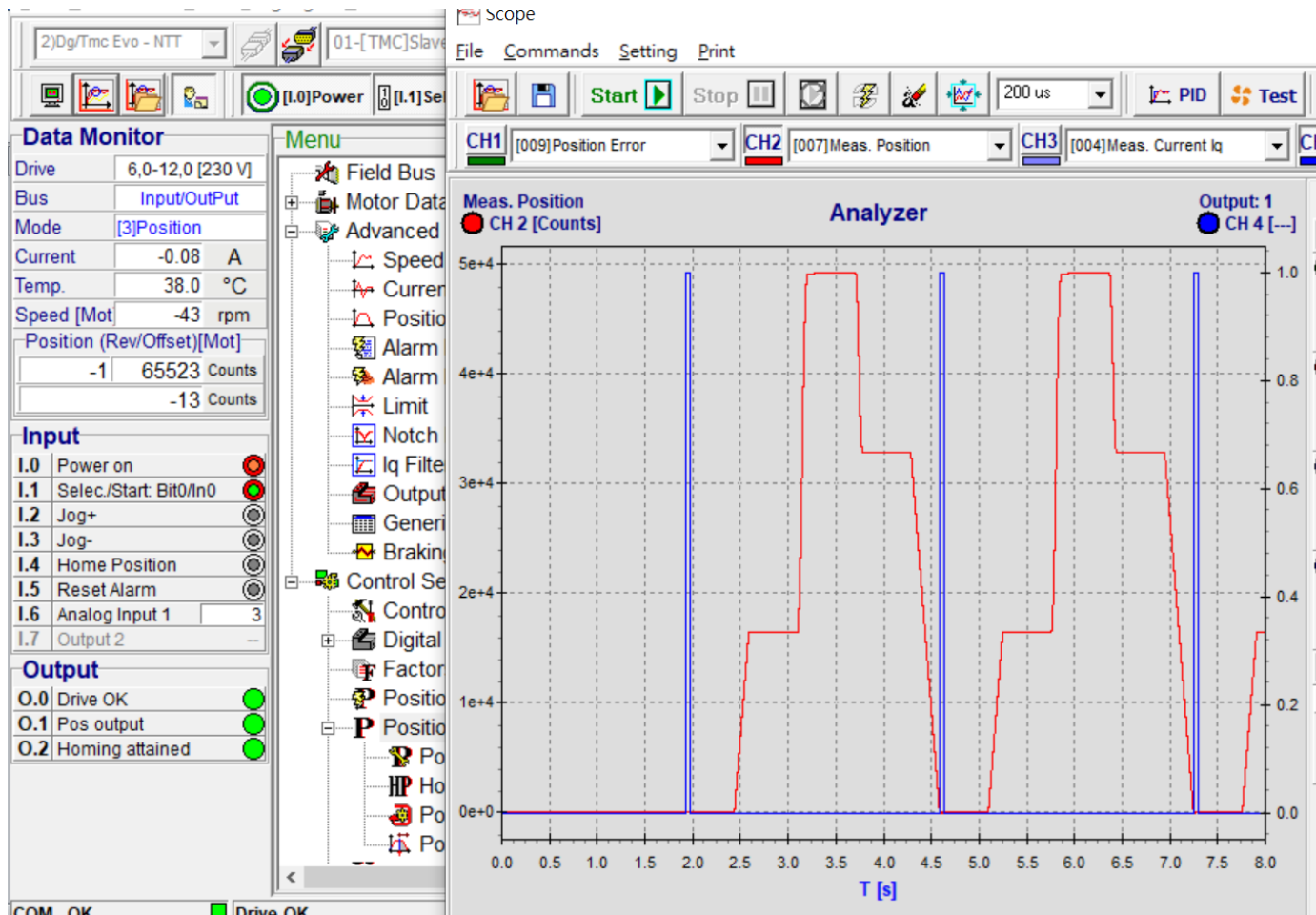
Pos-Tab input-start

Maximum Speed: 3000 Selection index: 0
 Pos. actual value: 135 Pos number: 1

Table

Index/N?	Accel.	Decel.	Time	Abso./Rela.	Vel. mode	Setting pos.	Output
0 (1)	0	10000	500	Absolute	Tab-rec data	Blend next pos.	Null
2	10000	10000	500	Absolute	Tab-rec data	Blend next pos.	Null
3	10000	10000	500	Absolute	Tab-rec data	Blend next pos.	Null
4	10000	10000	500	Absolute	Tab-rec data	Return start pos.	Out1
1 (5)	10000	10000	0	Absolute	Tab-rec data	Stop position	Null
2 (6)	10000	10000	0	Absolute	Tab-rec data	Stop position	Null
3 (7)	10000	10000	0	Absolute	Tab-rec data	Stop position	Null
4 (8)	10000	10000	0	Absolute	Tab-rec data	Stop position	Null
5 (9)	10000	10000	0	Absolute	Tab-rec data	Stop position	Null







嵐天自動化股份有限公司
i-Maku Automation CO., LTD.



謝謝您的選用

E-mail: sales@imaku.com.tw

聯絡人: 范揚昇

手機: 0937583280