



急停 Halt 及錯誤 Fault 時的煞車設定

Date: May 6th, 2020

1. 在位置, 速度, 加速度表中, 輸入需要的設定數值. 如下所示.

N?	Position	Velocity	Accel.	Decel.	Time	Abso./Rela.	Vel. mode
1	0	1000	5000	5000	1500	Absolute	Tab-rec data
2	600	1000	5000	5000	1500	Absolute	Tab-rec data
3	650	500	5000	5000	500	Absolute	Tab-rec data
4	0	1500	5000	5000	500	Absolute	Tab-rec data
5	650	500	5000	5000	500	Absolute	Tab-rec data
6	350	1000	5000	5000	500	Absolute	Tab-rec data
7	393216	1000	10000	10000	0	Absolute	Tab-rec data
8	458752	1000	10000	10000	0	Absolute	Tab-rec data
9	524288	1000	10000	10000	0	Absolute	Tab-rec data
10	589824	1000	10000	10000	0	Absolute	Tab-rec data
11	655360	1000	10000	10000	0	Absolute	Tab-rec data

2. 此時, 參考目前使用狀況之加減速設定值, 急停 Halt 或是錯誤 Fault 時的煞車設定值可以比加減速更短, 此例為 Acceleration=5000, 所以急停 Halt 或是錯誤 Fault 時的煞車設定值設為 10000. 如下圖所示.

在 Control Set → Control setting 下; Halt option code = [2] Ramp power on; Decel. Halt = 10000; Fault reaction set = [1] Deceleration Ramp; Deceleration Ramp = 10000; Fault torque limit[%] = 100.0

3. 線馬應用時, 或是可以直接設定 10000.

Menu

- Field Bus
- Motor Data
- Advanced Setup
- Control Set
 - Control Setting
 - Digital Input
 - Factors
 - Position Setting
 - Position
 - Main Speed
 - GearBox Mode
 - Torque
 - Electronic Cam
 - Press

Drive Data

Inputs

Control [0]Speed

Set input An1 Analog 1

Set input An2 Analog 2

Mode power On/Off Level input

Digital Input

I.0	[01] - Power on	Power on	Active high
I.1	[03] - Enable Ref.	Enable Ref.	Active high
I.2	[00] - Null-Off	-----	Active high
I.3	[00] - Null-Off	-----	Active high
I.4	[23] - Halt	Halt	Active high
I.5	[04] - Reset Alarm	Reset Alarm	Active high
I.6	[00] - Null-Off	Analog Input 1	Active high
I.7	[00] - Null-Off	Analog Input 2	Active high

Current Limit 1 [%] 200.0 Current Limit 2 [%] 200.0

Menu

- Field Bus
- Motor Data
- Advanced Setup
- Control Set
 - Control Setting
 - Digital Input
 - Factors
 - Position Setting
 - Position
 - Main Speed
 - GearBox Mode
 - Torque
 - Electronic Cam
 - Press

Drive Data

Control Setting

Halt

Halt option code [1] Ramp power off

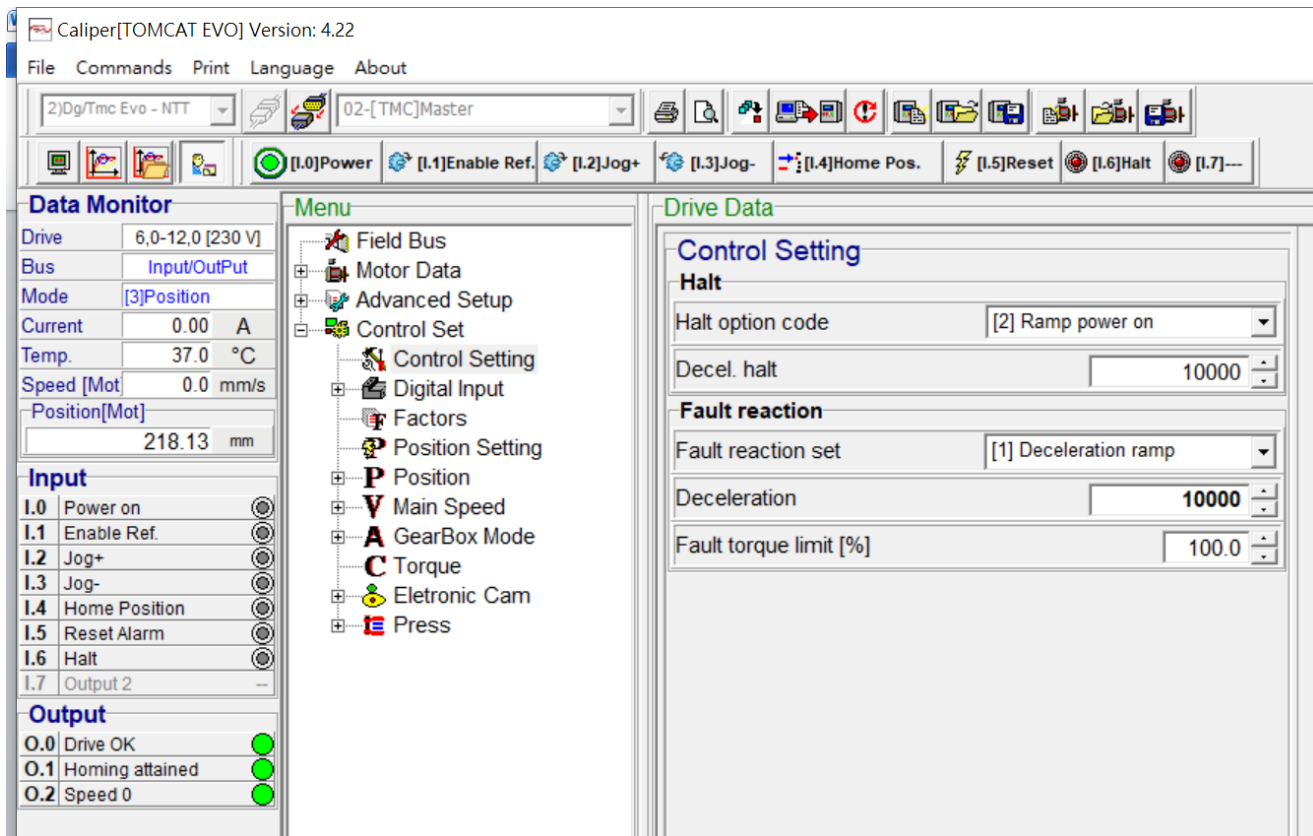
Decel. halt [1] Ramp power off

Fault reaction [2] Ramp power on

Fault reaction set [0] Disable power

Deceleration 1000

Fault torque limit [%] 100.0



以下空白



嵐天自動化股份有限公司
i-Maku Automation CO., LTD.



Motors & Digital Drives

謝謝您的選用

E-mail: sales@imaku.com.tw

聯絡人: 范揚昇

手機: 0937583280